



A QUARTERLY PUBLICATION FOR PREFERRED CLIENTS OF D.A. DAVIDSON & CO., DAVIDSON INVESTMENT ADVISORS AND DAVIDSON TRUST CO.

VOLUME 9, ISSUE 4

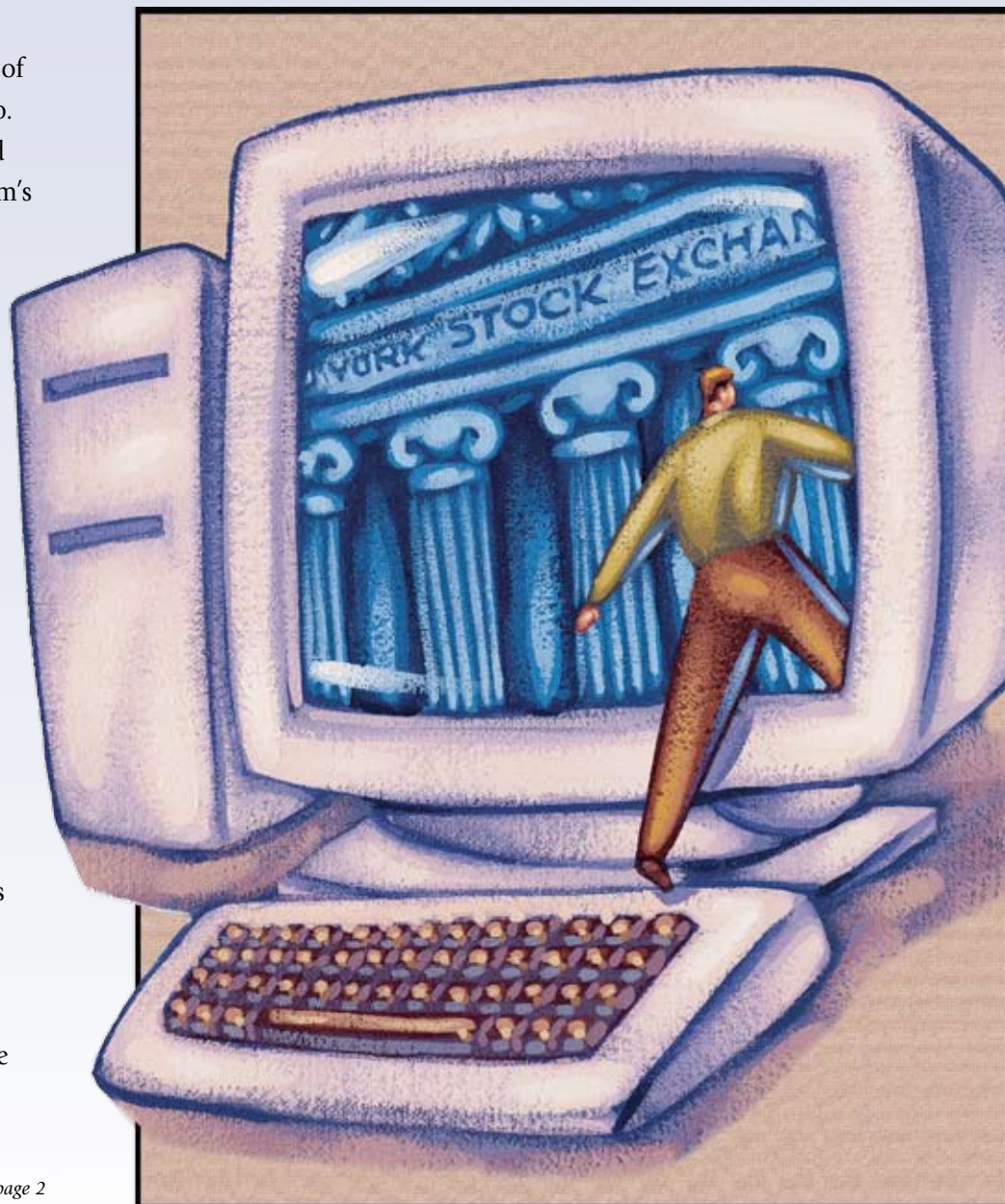
Fall 2006

## Your D.A. Davidson Account Online!

Carl Flinn, a retired businessman living in Billings, Montana, is one of nearly 20,000 D.A. Davidson & Co. clients who have already registered for Davidson Client Access, the firm's secure Internet account access service. Carl describes himself as a person who isn't particularly high tech by nature. In fact, his accounting staff wouldn't even allow him to get near the computers when he was in business, so he appreciates the ease and convenience of Davidson Client Access.

"It's so simple to use, I can check on all of the accounts in my household at any time — from any place where I have access to the Internet," he said. "The information is well organized and presented in a clear, easy-to-read format. It's a great service that I use often to track my portfolio, check balances and stay current."

*continued on page 2*



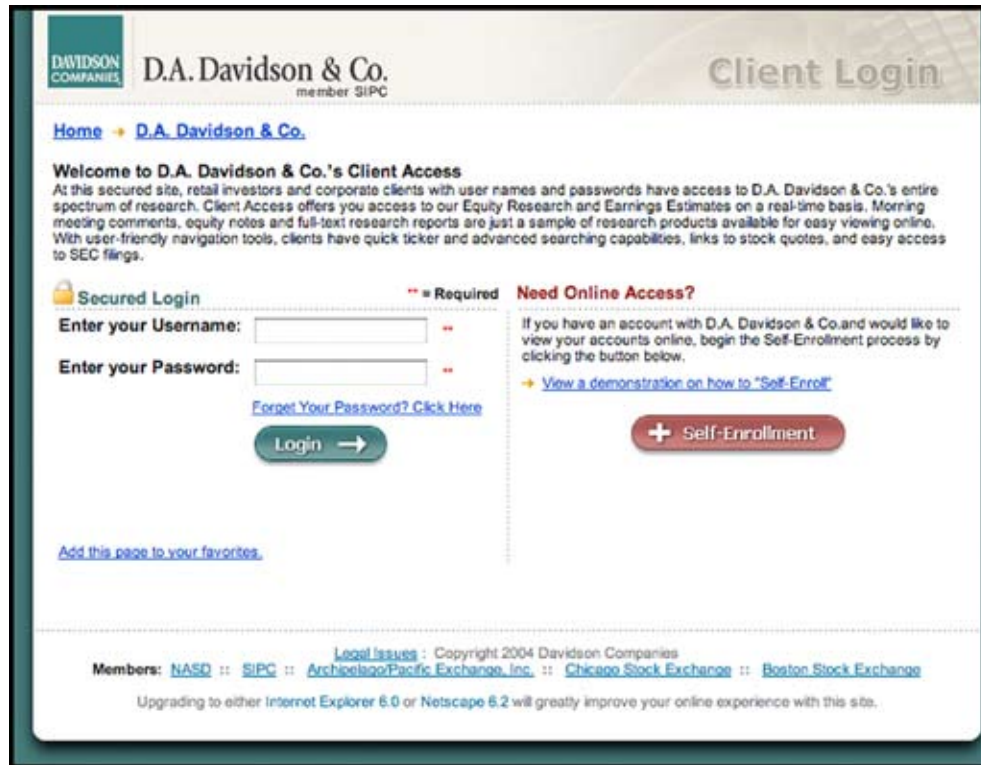
# Your D.A. Davidson Account Online!

To provide more service and value to Davidson Client Access users, D.A. Davidson has just launched Davidson eDelivery, an important enhancement to client access. This new service allows D.A. Davidson clients to receive their monthly client statements, confirmation documents, proxy statements and other key materials electronically in their secure Davidson Client Access site. The online documents portion of the site will present these documents for viewing, voting or printing at any time.

Many clients are interested in reducing the amount of paper delivered to their home or office. Some are interested in being more conscientious about using fewer paper resources. Others are just tired of trying to keep up with all the paper.

"I actually read and enjoy most of the mail I get from Davidson on behalf of the companies where I invest, but I can see why some people would really appreciate this option," Carl said. Because other clients have expressed similar interests, we at D.A. Davidson anticipate great interest in this new service.

Registering for Davidson Client Access and eDelivery is easy. From any computer with Internet access, simply go to the D.A. Davidson Individual Investor Web site at [www.dadavidson.com](http://www.dadavidson.com). From the home page, click the "client login" button on the navigation bar on the left side of your screen. Next, you will see the login screen. On the right side is the button to click to begin the registration process.



You will need your primary account number in order to complete the registration, so remember to have it handy before you start. If you are not sure which account number to use, please call your D.A. Davidson financial consultant or local branch office. We would be happy to help. In addition to your account number, you will be asked to choose and confirm a password as well as a question and answer to help if your password is ever forgotten or misplaced. That's it. You now have around-the-clock access to all of the accounts listed under your Social Security number or those that have been signed up for consolidated mailing to your household. Simply click the client login button from [www.dadavidson.com](http://www.dadavidson.com), type your password and you are all set.

◀ Login Page

Detail of Account ▶

Secure Home Page  
▼

The screenshot shows the D.A. Davidson & Co. Client Access interface. At the top, there's a navigation bar with 'Home', 'Portfolio', 'Activity', 'Watch List', 'Research', and 'Online Documents'. Below this is a search bar for 'Symbol' and a 'View Another Account' dropdown set to '12345678 (INDIVIDUAL)'. A 'Print' button and 'User Settings' link are visible. The main content area is titled 'Portfolio - Default View' and contains a table of investments.

Symbol	Purchase Price	Cost	Current Price	Value	Percent of Total	Gain or Loss Amount	Percent	Divisor	Est Annual Income	Yield %
	8,574.73		8,574.73		23.0%				371.29	4.32%
	8,574.73		8,574.73		23.0%				371.29	4.32%
FDX	14.75	1,475.00	18.00	1,800.00	4.8%	325.00	22.0%	0.00	0.00	0.00%
GE	33.55	4,193.75	32.75	4,887.50	11.8%	-195.25	-2.5%	1.00	125.00	3.06%
MSFT	2.83	283.00	2.83	283.00	0.8%	0.00	0.0%	0.00	0.00	0.00%
TMUS	0.45	45.00	0.50	50.00	0.1%	5.00	11.1%	0.00	0.00	0.00%
		6,996.75		6,200.50	16.7%	222.75	3.7%		125.00	2.81%
JNJ	0.15	15.00	0.25	5.00	0.0%	-10.00	-66.7%	0.00	0.00	0.00%
		15.00		5.00	0.0%	-10.00	-66.7%		0.00	0.00%
FILE PG SECS	26.00	2,600.00	26.00	2,600.00	7.0%	0.00	0.0%	2.00	200.00	7.83%
		2,600.00		2,600.00	7.0%	0.00	0.0%		200.00	7.83%
CALLABLE GO FSA RDURE	98.00	4,900.00	98.39	4,989.45	13.3%	89.45	1.4%	4.00	200.00	4.02%
		4,900.00		4,989.45	13.3%	89.45	1.4%		200.00	4.02%
NON-CALLABLE 4.1000%	92.75	4,837.50	97.75	4,887.00	13.1%	200.15	5.4%	4.15	207.10	4.25%
		4,837.50		4,887.00	13.1%	200.15	5.4%		207.60	4.25%
NON-CALLABLE 4.1000%	92.75	4,837.50	97.75	4,887.00	13.1%	200.15	5.4%	4.15	207.10	4.25%
		4,837.50		4,887.00	13.1%	200.15	5.4%		207.60	4.25%
NON-CALLABLE 4.1000%	92.75	4,837.50	97.75	4,887.00	13.1%	200.15	5.4%	4.15	207.10	4.25%
		4,837.50		4,887.00	13.1%	200.15	5.4%		207.60	4.25%
NON-CALLABLE 4.1000%	92.75	4,837.50	97.75	4,887.00	13.1%	200.15	5.4%	4.15	207.10	4.25%
		4,837.50		4,887.00	13.1%	200.15	5.4%		207.60	4.25%
NON-CALLABLE 4.1000%	92.75	4,837.50	97.75	4,887.00	13.1%	200.15	5.4%	4.15	207.10	4.25%
		4,837.50		4,887.00	13.1%	200.15	5.4%		207.60	4.25%
NON-CALLABLE 4.1000%	92.75	4,837.50	97.75	4,887.00	13.1%	200.15	5.4%	4.15	207.10	4.25%
		4,837.50		4,887.00	13.1%	200.15	5.4%		207.60	4.25%
NON-CALLABLE 4.1000%	92.75	4,837.50	97.75	4,887.00	13.1%	200.15	5.4%	4.15	207.10	4.25%
		4,837.50		4,887.00	13.1%	200.15	5.4%		207.60	4.25%
NON-CALLABLE 4.1000%	92.75	4,837.50	97.75	4,887.00	13.1%	200.15	5.4%	4.15	207.10	4.25%
		4,837.50		4,887.00	13.1%	200.15	5.4%		207.60	4.25%
NON-CALLABLE 4.1000%	92.75	4,837.50	97.75	4,887.00	13.1%	200.15	5.4%	4.15	207.10	4.25%
		4,837.50		4,887.00	13.1%	200.15	5.4%		207.60	4.25%
NON-CALLABLE 4.1000%	92.75	4,837.50	97.75	4,887.00	13.1%	200.15	5.4%	4.15	207.10	4.25%
		4,837.50		4,887.00	13.1%	200.15	5.4%		207.60	4.25%
NON-CALLABLE 4.1000%	92.75	4,837.50	97.75	4,887.00	13.1%	200.15	5.4%	4.15	207.10	4.25%
		4,837.50		4,887.00	13.1%	200.15	5.4%		207.60	4.25%
NON-CALLABLE 4.1000%	92.75	4,837.50	97.75	4,887.00	13.1%	200.15	5.4%	4.15	207.10	4.25%
		4,837.50		4,887.00	13.1%	200.15	5.4%		207.60	4.25%
NON-CALLABLE 4.1000%	92.75	4,837.50	97.75	4,887.00	13.1%	200.15	5.4%	4.15	207.10	4.25%
		4,837.50		4,887.00	13.1%	200.15	5.4%		207.60	4.25%
NON-CALLABLE 4.1000%	92.75	4,837.50	97.75	4,887.00	13.1%	200.15	5.4%	4.15	207.10	4.25%
		4,837.50		4,887.00	13.1%	200.15	5.4%		207.60	4.25%
NON-CALLABLE 4.1000%	92.75	4,837.50	97.75	4,887.00	13.1%	200.15	5.4%	4.15	207.10	4.25%
		4,837.50		4,887.00	13.1%	200.15	5.4%		207.60	4.25%
NON-CALLABLE 4.1000%	92.75	4,837.50	97.75	4,887.00	13.1%	200.15	5.4%	4.15	207.10	4.25%
		4,837.50		4,887.00	13.1%	200.15	5.4%		207.60	4.25%
NON-CALLABLE 4.1000%	92.75	4,837.50	97.75	4,887.00	13.1%	200.15	5.4%	4.15	207.10	4.25%
		4,837.50		4,887.00	13.1%	200.15	5.4%		207.60	4.25%
NON-CALLABLE 4.1000%	92.75	4,837.50	97.75	4,887.00	13.1%	200.15	5.4%	4.15	207.10	4.25%
		4,837.50		4,887.00	13.1%	200.15	5.4%		207.60	4.25%
NON-CALLABLE 4.1000%	92.75	4,837.50	97.75	4,887.00	13.1%	200.15	5.4%	4.15	207.10	4.25%
		4,837.50		4,887.00	13.1%	200.15	5.4%		207.60	4.25%
NON-CALLABLE 4.1000%	92.75	4,837.50	97.75	4,887.00	13.1%	200.15	5.4%	4.15	207.10	4.25%
		4,837.50		4,887.00	13.1%	200.15	5.4%		207.60	4.25%
NON-CALLABLE 4.1000%	92.75	4,837.50	97.75	4,887.00	13.1%	200.15	5.4%	4.15	207.10	4.25%
		4,837.50		4,887.00	13.1%	200.15	5.4%		207.60	4.25%
NON-CALLABLE 4.1000%	92.75	4,837.50	97.75	4,887.00	13.1%	200.15	5.4%	4.15	207.10	4.25%
		4,837.50		4,887.00	13.1%	200.15	5.4%		207.60	4.25%
NON-CALLABLE 4.1000%	92.75	4,837.50	97.75	4,887.00	13.1%	200.15	5.4%	4.15	207.10	4.25%
		4,837.50		4,887.00	13.1%	200.15	5.4%		207.60	4.25%
NON-CALLABLE 4.1000%	92.75	4,837.50	97.75	4,887.00	13.1%	200.15	5.4%	4.15	207.10	4.25%
		4,837.50		4,887.00	13.1%	200.15	5.4%		207.60	4.25%
NON-CALLABLE 4.1000%	92.75	4,837.50	97.75	4,887.00	13.1%	200.15	5.4%	4.15	207.10	4.25%
		4,837.50		4,887.00	13.1%	200.15	5.4%		207.60	4.25%
NON-CALLABLE 4.1000%	92.75	4,837.50	97.75	4,887.00	13.1%	200.15	5.4%	4.15	207.10	4.25%
		4,837.50		4,887.00	13.1%	200.15	5.4%		207.60	4.25%
NON-CALLABLE 4.1000%	92.75	4,837.50	97.75	4,887.00	13.1%	200.15	5.4%	4.15	207.10	4.25%
		4,837.50		4,887.00	13.1%	200.15	5.4%		207.60	4.25%
NON-CALLABLE 4.1000%	92.75	4,837.50	97.75	4,887.00	13.1%	200.15	5.4%	4.15	207.10	4.25%
		4,837.50		4,887.00	13.1%	200.15	5.4%		207.60	4.25%
NON-CALLABLE 4.1000%	92.75	4,837.50	97.75	4,887.00	13.1%	200.15	5.4%	4.15	207.10	4.25%
		4,837.50		4,887.00	13.1%	200.15	5.4%		207.60	4.25%
NON-CALLABLE 4.1000%	92.75	4,837.50	97.75	4,887.00	13.1%	200.15	5.4%	4.15	207.10	4.25%
		4,837.50		4,887.00	13.1%	200.15	5.4%		207.60	4.25%
NON-CALLABLE 4.1000%	92.75	4,837.50	97.75	4,887.00	13.1%	200.15	5.4%	4.15	207.10	4.25%
		4,837.50		4,887.00	13.1%	200.15	5.4%		207.60	4.25%
NON-CALLABLE 4.1000%	92.75	4,837.50	97.75	4,887.00	13.1%	200.15	5.4%	4.15	207.10	4.25%
		4,837.50		4,887.00	13.1%	200.15	5.4%		207.60	4.25%
NON-CALLABLE 4.1000%	92.75	4,837.50	97.75	4,887.00	13.1%	200.15	5.4%	4.15	207.10	4.25%
		4,837.50		4,887.00	13.1%	200.15	5.4%		207.60	4.25%
NON-CALLABLE 4.1000%	92.75	4,837.50	97.75	4,887.00	13.1%	200.15	5.4%	4.15	207.10	4.25%
		4,837.50		4,887.00	13.1%	200.15	5.4%		207.60	4.25%
NON-CALLABLE 4.1000%	92.75	4,837.50	97.75	4,887.00	13.1%	200.15	5.4%	4.15	207.10	4.25%
		4,837.50		4,887.00	13.1%	200.15	5.4%		207.60	4.25%
NON-CALLABLE 4.1000%	92.75	4,837.50	97.75	4,887.00	13.1%	200.15	5.4%	4.15	207.10	4.25%
		4,837.50		4,887.00	13.1%	200.15	5.4%		207.60	4.25%
NON-CALLABLE 4.1000%	92.75	4,837.50	97.75	4,887.00	13.1%	200.15	5.4%	4.15	207.10	4.25%
		4,837.50		4,887.00	13.1%	200.15	5.4%		207.60	4.25%
NON-CALLABLE 4.1000%	92.75	4,837.50	97.75	4,887.00	13.1%	200.15	5.4%	4.15	207.10	4.25%
		4,837.50		4,887.00	13.1%	200.15	5.4%		207.60	4.25%
NON-CALLABLE 4.1000%	92.75	4,837.50	97.75	4,887.00	13.1%	200.15	5.4%	4.15	207.10	4.25%
		4,837.50		4,887.00	13.1%	200.15	5.4%		207.60	4.25%
NON-CALLABLE 4.1000%	92.75	4,837.50	97.75	4,887.00	13.1%	200.15	5.4%	4.15	207.10	4.25%
		4,837.50		4,887.00	13.1%	200.15	5.4%		207.60	4.25%
NON-CALLABLE 4.1000%	92.75	4,837.50	97.75	4,887.00	13.1%	200.15	5.4%	4.15	207.10	4.25%
		4,837.50		4,887.00	13.1%	200.15	5.4%		207.60	4.25%
NON-CALLABLE 4.1000%	92.75	4,837.50	97.75	4,887.00	13.1%	200.15	5.4%	4.15	207.10	4.25%
		4,837.50		4,887.00	13.1%	200.15	5.4%		207.60	4.25%
NON-CALLABLE 4.1000%	92.75	4,837.50	97.75	4,887.00	13.1%	200.15	5.4%	4.15	207.10	4.25%
		4,837.50		4,887.00						

# Frequently Asked Questions

## *How can I view my spouse's account on my Davidson Client Access site when that account isn't signed up for consolidated mailing to our household?*

Your spouse will need to register for Davidson Client Access. From there, clicking on "user settings" will open a screen that allows him or her to include the account as a "guest" of your Client Access presentation. Bear in mind that eDelivery and other actions on the spouse's account can only occur from that person's dedicated Client Access site. For complete access to all accounts and functions, all accounts will need to be enrolled for consolidated mailing. Your D.A. Davidson financial consultant can help.

## *I like the idea of having my documents sent electronically, but what if I change my mind?*

You have the option of changing or canceling your eDelivery preferences at any time from your Client Access site.

## *Can I get both paper and electronic delivery?*

If you prefer, D.A. Davidson can provide both paper and electronic versions of your monthly client statements, confirms and tax documents. All other documents are

available in one form only: either paper or electronic. Just check your preferences from the Client Access home page.

## *How will I know when new documents have been delivered?*

You will receive an email at the address you note in your registration notifying you that new documents have been sent.

## *What if I don't get the message?*

If the notification message is returned as undeliverable, the system will try to deliver it two more times. If delivery is unsuccessful after three attempts, the system will automatically switch your account(s) to paper delivery. Please remember to set your computer's "junk mail" function to allow emails from D.A. Davidson.

## *Why don't you just send me a link that will take me directly to my documents?*

D.A. Davidson clients simply need to log in to their Client Access site and click the "online documents" button to view their document at any time. This is a much more secure method of document delivery than sending links, which are easily replicated by criminals.

